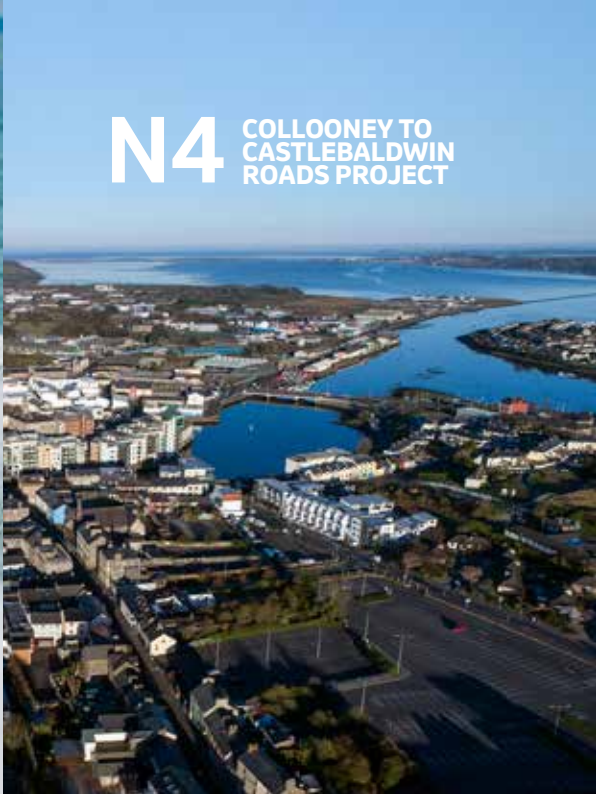


ENHANCING SLIGO AS A CENTRE FOR REGIONAL GROWTH



N4 COLLOONEY TO
CASTLEBALDWIN
ROADS PROJECT



Driving regional growth in Sligo and the North West

The new N4 Collooney to Castlebaldwin Roads Project opened to traffic in August 2021. This is the main national road link between Dublin and Sligo and completes a 27km stretch of dual carriageway into Sligo.

This important new road will make Sligo and the North West even more attractive for jobs and tourism, as well as safer for local communities.

Sligo is a designated Regional Growth Centre in the Government's Project Ireland 2040 National Planning Framework (NPF). Connectivity is a key element of achieving growth and by improving accessibility to the North West Region, this road supports a key NPF objective of balanced regional development.



The National Planning Framework (NPF) recognises Sligo's potential to serve the North West as an accessible centre of employment and services, which can be a focal point for investment and have the widest possible regional influence. Sligo is therefore designated a key Regional Centre, capable of leading the development of the surrounding region.



Custom made foot orthotic
manufacturer, Firefly, Sligo
©Western Development
Commission ©Suzy
McCanny

Sligo techn firm
Frakli ©Western
Development
Commission
©Suzy McCanny

Sligo is growing...

With easily accessible transport links by road, rail, air and sea, highly skilled talent and an appealing work-life balance, Sligo is an attractive proposition for companies looking to relocate or expand. This growing regional centre is actively building hubs and clusters in a number of industries, including technology, life sciences and engineering.

"The presence of strong employment sectors such as Pharma and Engineering, Higher Education Institutes (HEIs), cultural institutions and health services indicate latent capacity for Sligo to enhance its regional role. This can be achieved through building critical mass of population and further employment, in tandem with enhanced accessibility and quality of life." - National Planning Framework

Sligo is growing

Educated workforce

Sligo's third level sector is thriving with a student population of over 10,000. Sligo Institute of Technology and St Angela's College will soon become part of a new Technological University. Together they offer a pipeline of educated and skilled graduates to support the growth of business and industry. They develop and deliver bespoke programmes to meet industry needs and also provide life-long and distance learning opportunities in Sligo to further strengthen the region's talent pool.

Inspiring tourism

As resting place of W.B. Yeats and the inspiration for one of his most famous works, *The Lake Isle of Innisfree*, Sligo is a high point on the tourism trail. Located on the Wild Atlantic Way, Sligo is a hub of activity including surfing, kayaking, sailing, sea-swimming and fishing. Majestic Benbulbin attracts mountain climbers and hill walkers seeking a challenge.

Sligo welcomed over half a million tourists in 2019, including overseas and domestic visitors. Tourism is projected to continue to grow: by 2023 estimated tourism revenue is expected to reach €150m. Sligo's conference venues can cater for up to 950 delegates; while dozens of high-quality hotels provide Sligo with plenty of accommodation for business and tourism.

Enjoying Sligo's beaches; Internal chamber at Carrowkeel passage tombs; and Benbulbin @Sligo Tourism

Sligo based US tech firm, Overstock @Western Development Commission @Suzy McCanny



PROJECT HISTORY

1990 - Planning for the N4 Collooney to Castlebaldwin Roads Project began more than 20 years ago.

2009 - Real momentum was built up for the scheme again following the formation of the N4 Action Group. This group of local people was very active in highlighting the dangerous nature of the existing N4, including erecting 30 white crosses along the route, representing each fatality.

2014 - Planning permission secured for the scheme.

2015-2018 - With planning permission secured, Sligo County Council progressed advance works such as fencing, archaeological investigation, house demolition, diversion of overhead power cables etc. This allowed a clear site for the main contractor. The scheme involved the acquisition of almost 200 hectares of land and 135 landowners.

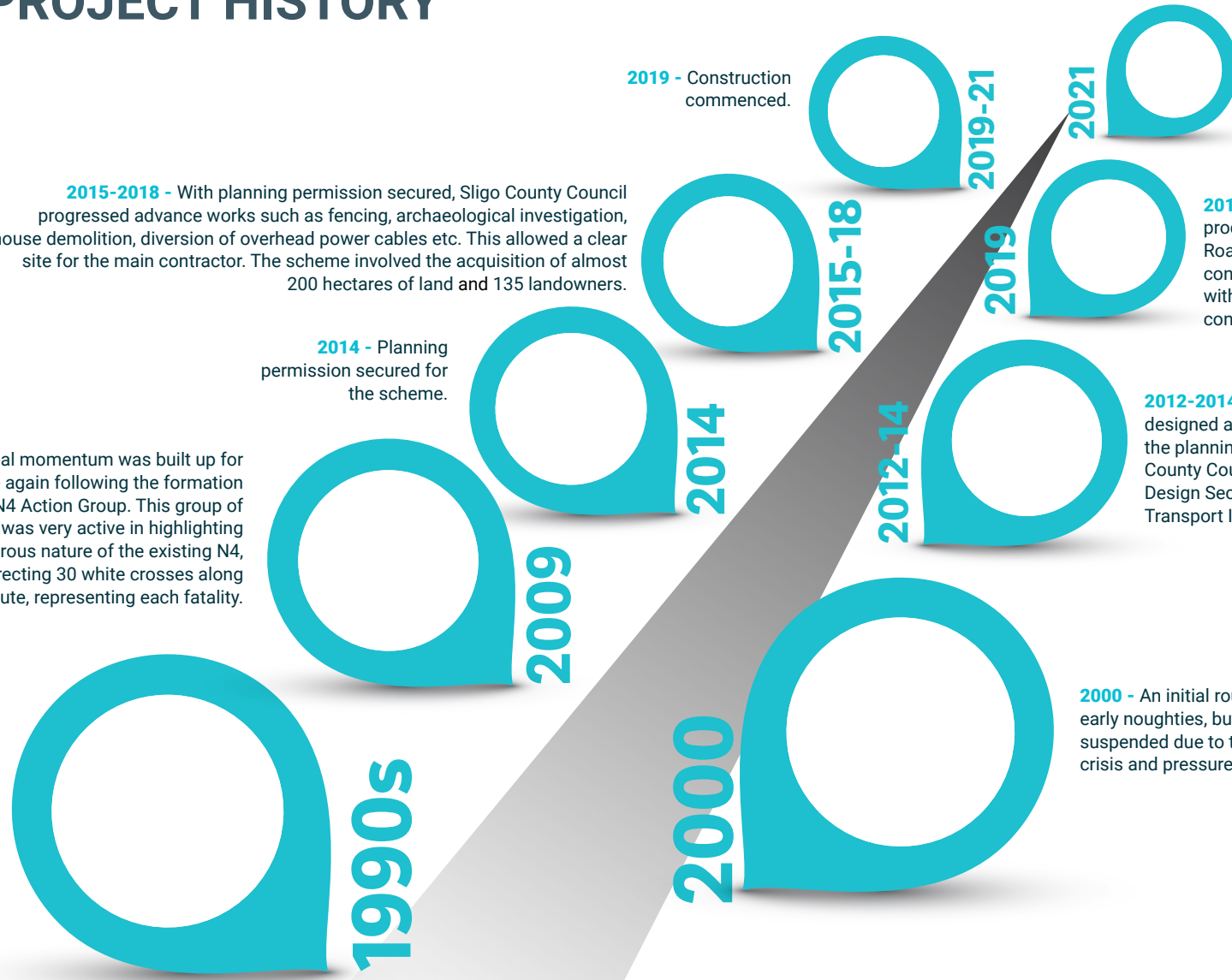
2019 - Construction commenced.

2012-14

2012-2014 - The scheme was designed and brought through the planning process by Sligo County Council's National Road Design Section, fully supported by Transport Infrastructure Ireland.

2019 - Following procurement, the contractor Roadbridge was awarded the contract, in February 2019, with a two-and-a-half year construction schedule.

2021 - N4 Collooney to Castlebaldwin Roads Project opened to traffic in August 2021.



Sligo is growing

Sligo for life

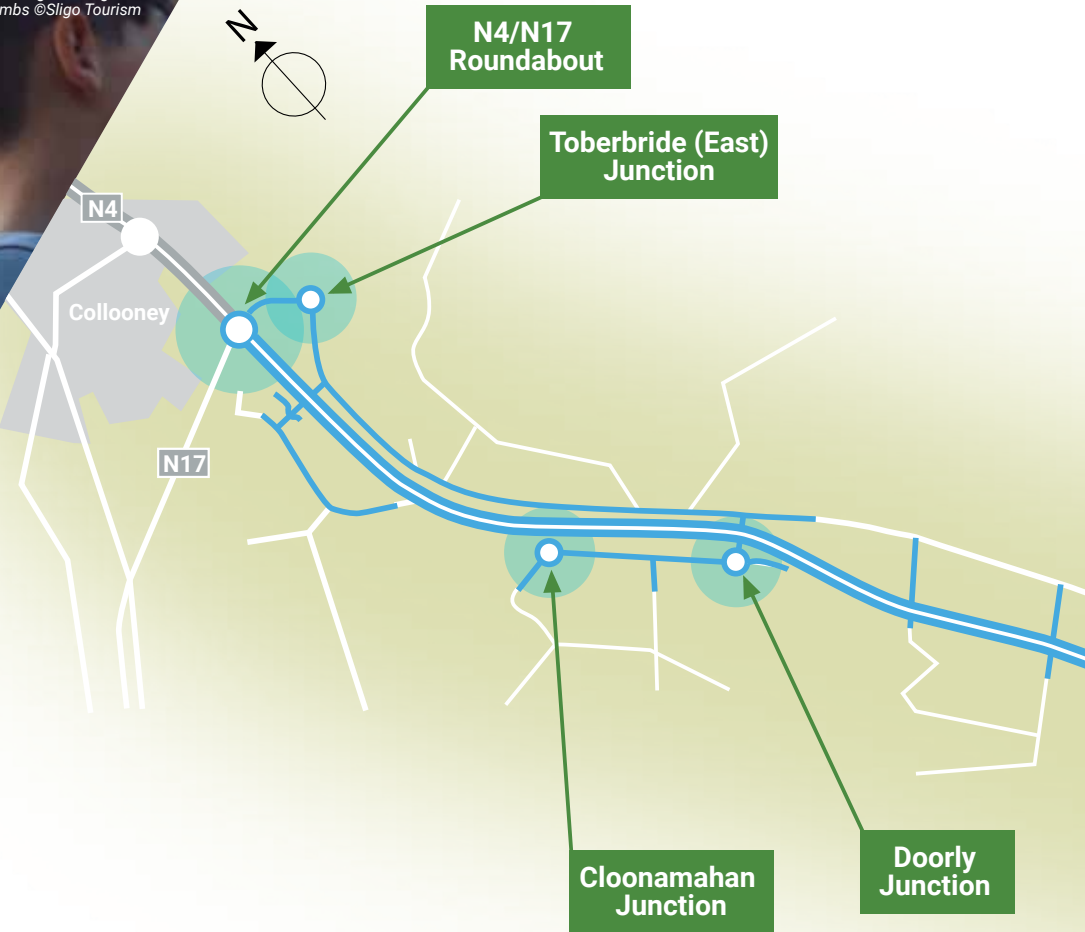
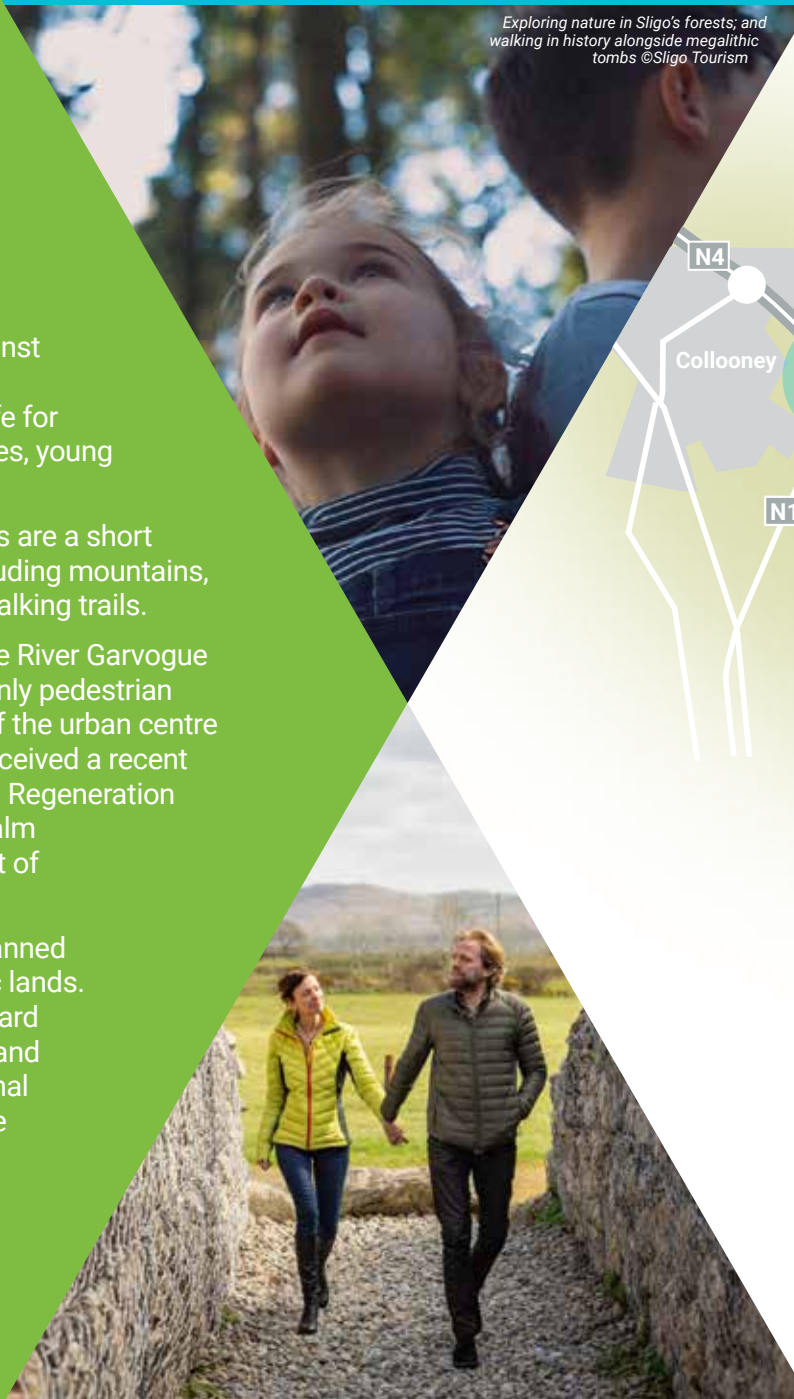
People move to Sligo for study or work, and they stay here to live! Against a backdrop of the Wild Atlantic Way, Sligo offers an excellent quality of life for people of all ages – students, families, young professionals and the golden years.

A wide selection of natural amenities are a short distance from the Urban Centre including mountains, beaches, forests, lakes, rivers and walking trails.

Sligo's urban core is enhanced by the River Garvogue flowing through the centre, with mainly pedestrian walkways alongside. The vibrancy of the urban centre is continually being improved and received a recent boost with almost €50 million Urban Regeneration Development Funding for Public Realm enhancements and the development of a new cultural centre.

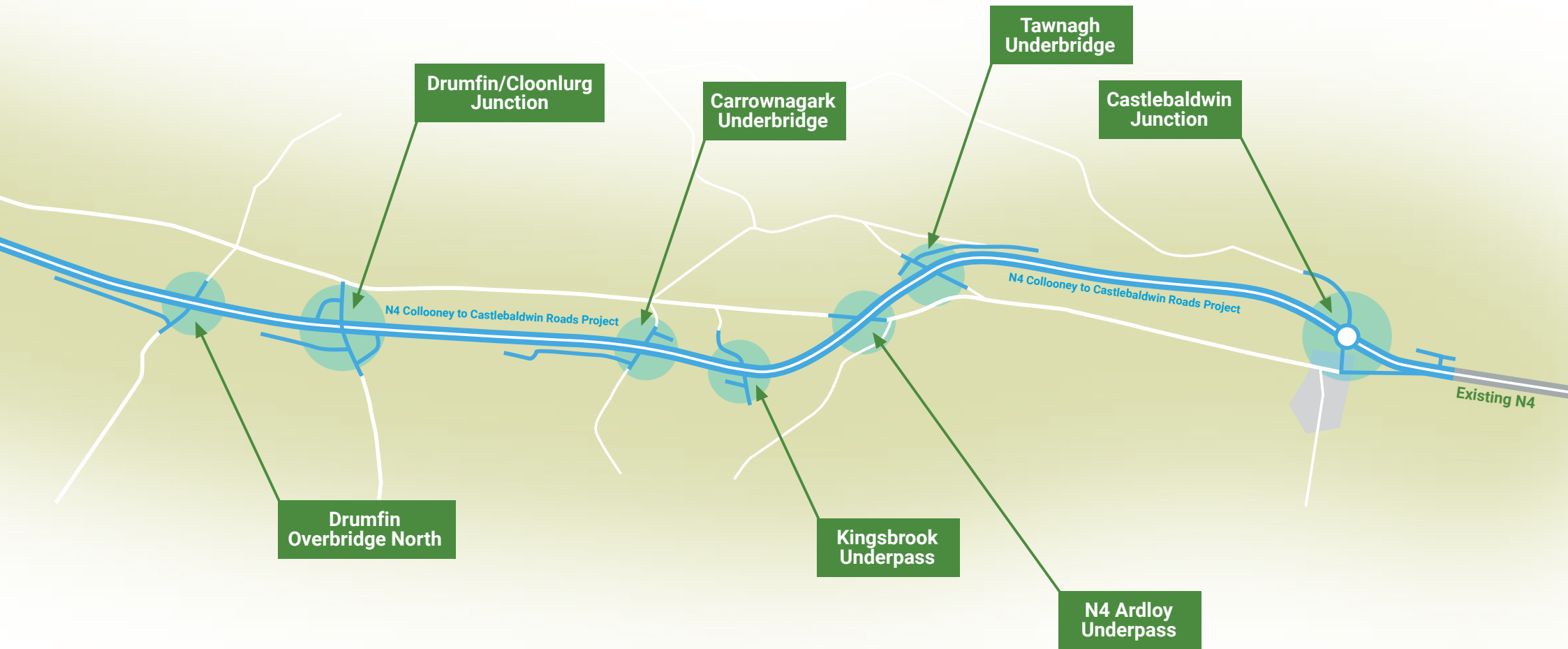
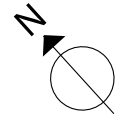
Further regeneration projects are planned for Sligo on publicly owned strategic lands. Sligo County Council is looking forward to enhancing existing partnerships, and developing new ones, at local, national and international level, to bring these ambitious projects to fruition.

Exploring nature in Sligo's forests; and walking in history alongside megalithic tombs ©Sligo Tourism



“Key planning and development and placemaking policy priorities for the Northern and Western Region outlined in the NPF include: Enhancing the city-region type functions performed by Sligo in line with its statutory development plan; activating the potential for further rejuvenation and renewal of its core; and further enhancing its connectivity in a national and regional context to ensure wider accessibility of relevant services and amenities.” - National Planning Framework

N4 Collooney to Castlebaldwin Roads Project



Better road connection for Sligo and the North West delivers national objectives



**Cllr Paul Taylor,
Cathaoirleach, Sligo
County Council**

Removing cars and trucks from the old N4 and designating it a Local

Road gives Sligo County Council the opportunity to provide a segregated cycleway linking the villages of Collooney and Castlebaldwin. Importantly, the new road removes heavy traffic from these villages, making them more attractive and safer for local people. By making the local area safer and providing a cycleway, this project will also encourage and enable people to choose more sustainable transport options, such as cycling and walking.

This new road will benefit everybody in County Sligo. It has the potential to be a game changer by helping to boost the local economy, bring jobs to the region and make Sligo a better and safer place to live, travel, and work in.

Sligo County Council is grateful for all the local support to help us deliver this vital new road. The N4 Action Group highlighted the need for the project and has supported all stages of project development and construction. The new road could not have been achieved without the many landowners who facilitated it and we thank them for their cooperation both in advance of and during construction.



**An Taoiseach,
Micheál Martin, T.D.**

I wish to congratulate all of the workers and planners who were involved in the construction of this road, one of the first National Roads

Projects to be delivered under Project Ireland 2040, 'Regional Connectivity'.

It will significantly improve road safety and help to secure people's futures in Sligo and the North West.

Better access to Sligo and the North West provides a platform to deliver on the Project Ireland 2040 designation for Sligo as a Regional Growth Centre capable of leading the development of the surrounding region. This Project is a catalyst for balanced regional development and it will make the region even more attractive for investment and relocation.

This major investment reaffirms the Government's commitment to Sligo. The recently opened Western Distributor Road and the Eastern Garvogue Bridge, due to commence next year, are helping to remove traffic from the centre of Sligo, thus enabling the enhancement of the urban core. We have recently committed €50m in Urban Regional Development Funding (URDF) for Public Realm enhancements and the development of a new cultural centre in the urban core.

I look forward to watching Sligo thrive and grow to its true potential as a Regional Growth Centre, and I wish Sligo County Council every success in driving the vision forward.



**Cormac O'Rourke,
Chairman, Transport
Infrastructure Ireland (TII)**

The completion of the N4 Collooney to Castlebaldwin Road

Project is an important step toward delivering on the Government's Project Ireland 2040 plan, contributing to the overall safety along the Sligo to Dublin corridor, developing local and regional connectivity along the Border Region and enhancing access to the North West of the country.

TII continues to deliver, along with our Local Authority partners, the needed road safety improvements throughout the historic national roads network, along with maintaining the existing network. This national and local collaboration formally establishes the commitment to deliver on all the National Road elements contained within the Government's Project Ireland 2040 plan.

A project like today's N4 Collooney to Castlebaldwin is a prime example of the upgrades needed to the national roads network to deliver on TII's remit to enhance safety and improve efficiency under the Government's Project Ireland 2040 plan.



**Martin Lydon,
Chief Executive, Sligo
County Council**

This National Roads Project is a milestone for Sligo and the

Northwest. As a designated Regional Growth Centre, enhancing and upgrading accessibility between urban centres and their regions and ensuring compact growth is essential. By improving journey time reliability between Dublin and Sligo, the new section of the N4 will position Sligo as being more attractive for economic development and will encourage future investment, job creation and tourism.

Sligo's position on the Wild Atlantic Way and close to the border with Northern Ireland is an added advantage in terms of connectivity.

Sligo County Council is grateful for the Government and TII's commitment to the county. As a local authority we look forward to continuing to work together with all of our stakeholders and partners – local, national and international - to enhance Sligo's reputation and attractiveness as the optimum place to live, invest, work and visit.

"Sligo serves a large hinterland that extends beyond County Sligo into surrounding counties, to include parts of Donegal, Leitrim, Mayo and Roscommon, supported in particular by nearby county towns. Sligo's significance as a centre of employment and services is much greater than its scale in terms of population." - National Planning Framework

Sligo is growing

Space to do business

Sligo provides flexible office solutions, affordable development sites and commercial properties, with an excellent broadband network. Businesses are supported through the Sligo Economic Forum and Sligo County Council together with the IDA, Enterprise Ireland and other agencies that provide collaboration and business support to start-ups and investors alike.

Sligo's Landing Space office hub is a fast-landing solution for FDI clients seeking to establish a base of operations, on a per desk basis. This hub enables clients to test the labour market, experience the location and build its talent pool, while working locally on a more long-term property solution. Part of Vodafone and SIRO's national Gigabit Hub Initiative, the Landing Space enjoys 1 Gigabit broadband connections free-of-charge to qualifying business, for two years.



Sligo's urban centre and the Glasshouse Hotel ©Donal Hackett, Photographer

Ward Automation make solutions for med-tech and pharma sectors ©Western Development Commission ©Suzy McCanny



The Building Block co-working space, Sligo ©Donal Hackett

Lough Gill Distillery ©Western Development Commission ©Suzy McCanny



Project Benefits

Strategic Benefit

This Project is delivering on a core priority in Project Ireland 2040 National Planning Framework which is “to enhance and upgrade accessibility between urban centres of population and their regions, in parallel with the initiation of compact growth of urban centres”. The project promotes efficient and effective national transport links between the Greater Dublin Area and the North-West, allowing reserve capacity for future demand and economic expansion.

Drive regional growth

This enhanced high-quality transport corridor will result in shorter and more reliable journey times. This will support existing investment and employment in Sligo and the North West. It will also position Sligo and the region as being more attractive for economic development including future investment, job creation and tourism.

Safer communities

This modern new road replaces a section of national primary road that, tragically, saw 30 fatalities over the past 30 years. The new road will significantly improve safety.

Enable more cycling and walking

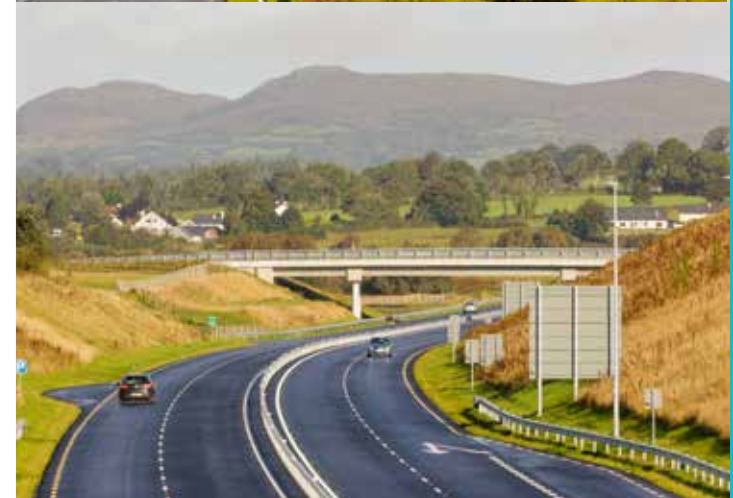
This road supports the National Active Travel Policy of encouraging and enabling people to choose more sustainable transport options, such as cycling and walking by the provision of over 3km of greenway. It also opens the opportunity to explore the feasibility of providing a dedicated cycling/walking route along the full length of the old N4 which will become a local road with very low levels of traffic.

Reduce pollution

By reducing traffic delays the new road will provide environmental benefits too. Reduced vehicle emissions will contribute to improved air quality and water quality.

Facilitate public transport

The new road will improve the public transport road link between Dublin and Sligo for people accessing work, education, healthcare, culture, sports and tourism.



I will arise and go now, and
a small cabin build there, of clay and
wattle, where I have there, a hive for
the bee-rows will I have there, a hive for
And live alone in the bee-land
and have some peace there, for peace
at the morning to

Front cover photos: ©James Connolly, Photographer; ©Donal Hackett, Photographer; ©Sligo Tourism, Photos of N4 Roads Project: ©James Connolly, Photographer

